



GLOBAL INSIGHT

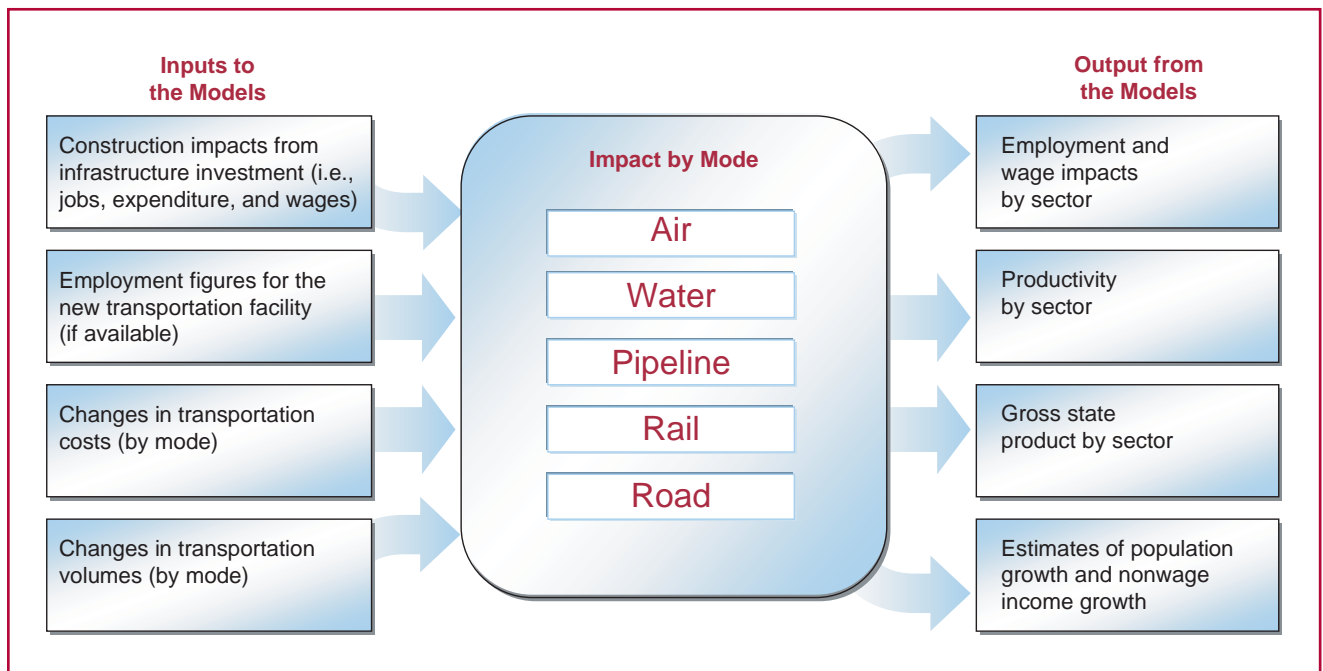
**U.S. REGIONAL TRANSPORTATION
IMPACT MODELS**

► **MEASURING THE ECONOMIC IMPACT OF NEW FREIGHT TRANSPORTATION PROJECTS**

Global Insight’s Regional Transportation Impact capability combines our unparalleled transportation expertise with our state and metro forecasting acumen to measure the economic impact of freight transportation infrastructure projects at the state level.

These custom-built models allow us to measure the direct and indirect impacts of transportation infrastructure projects on each state’s economy. By estimating changes in freight flows due to an infrastructure enhancement, we are able to model the impacts on both gross state product (GSP) and employment by business sector, allowing clients to quantify the economic impacts of a particular project. This analysis can also be applied to metro areas and counties.

U.S. REGIONAL TRANSPORTATION IMPACT MODEL



The models estimate impacts by sector for 32 NAICS sectors at the three-digit NAICS level.



U.S. REGIONAL TRANSPORTATION IMPACT MODELS

▶ TRANSPORTATION IMPACT MODEL METHODOLOGY

Our transportation impact model leverages Global Insight's renowned U.S. state and metro models, providing clients with an accurate measure of changes to our baseline forecast for key economic concepts such as personal income, housing starts, labor force, and retail sales by state or metro area.

We utilize Department of Transportation, Bureau of Economic Analysis, and Bureau of Labor Statistics data to calculate volume of shipments by sector and the average cost of shipments by mode of transport for each state. A transportation cost index is created for each sector and plays an integral role in measuring the impact of new transportation infrastructure on each sector.

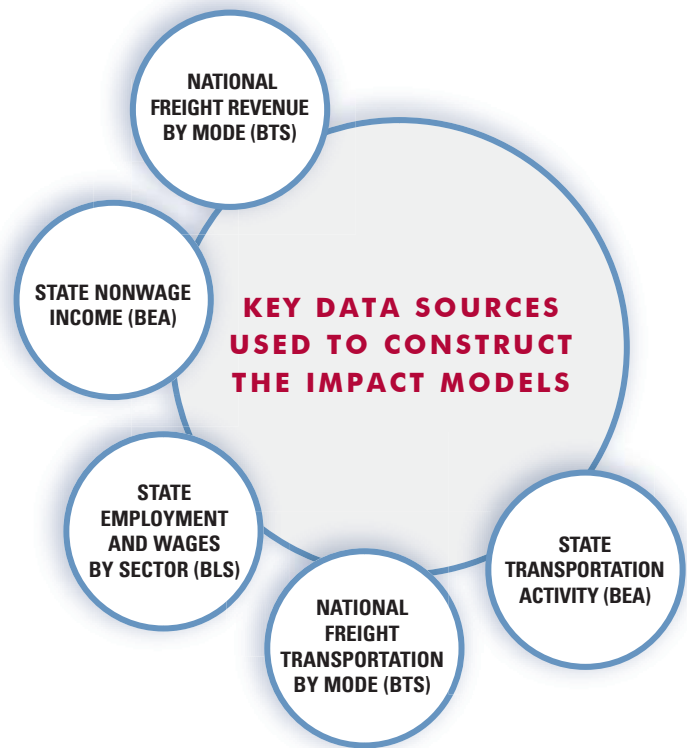
▶ RECENTLY COMPLETED PROJECTS

Evaluation of Intermodal Port Facility

Global Insight recently evaluated the impact of a proposed intermodal port facility on the economic environment at both the state and county levels. Our transportation impact model was used to measure the direct and indirect impacts of this infrastructure project. Our U.S. Regional state and county forecast was used as the baseline, and the impact model measured increases to both employment and productivity at the state and county levels.

Cost-benefit Analysis of Rail Infrastructure

The Global Insight Regional Transportation Impact Model was used by a southeastern state government in a cost-benefit analysis of a rail infrastructure re-investment project. More than 30 existing railroads were analyzed individually, each with differing mixes of use by manufacturing and service sectors in the state. Global Insight's impact analysis was used in the process to determine the future of the rail network—if public money should be used to maintain the track or if the network would be retired.



▶ **ABOUT GLOBAL INSIGHT'S U.S. REGIONAL GROUP**

For more than 40 years, our expert team has provided an independent, fact-based macroeconomic and regional view of the U.S. economy and industries. Access to our senior-level analysts is one of the key benefits for Global Insight clients. Our U.S. Regional experts are fully supported by our 325+ economists and analysts worldwide with expertise in over 170 industries and 200 countries.

▶ **ABOUT GLOBAL INSIGHT'S GLOBAL TRADE AND TRANSPORTATION GROUP**

Global Insight is the preeminent information provider for international freight markets. In 2005, Global Insight acquired Reebie and Associates, a leader in U.S. freight transportation and distribution for more than 35 years. With our thorough coverage of U.S., Mexican, and Canadian domestic freight markets and our international trade experience, we now offer the most complete picture of commercial freight traffic anywhere.

THE POWER OF PERSPECTIVE

ABOUT GLOBAL INSIGHT: Global Insight, Inc. (<http://www.globalinsight.com/>) is a privately held company that brought together the two most respected economic information companies in the world, DRI and WEFA. Global Insight provides the most comprehensive economic and financial information available on countries, regions and industries, using a unique combination of expertise, models, data and software within a common analytical framework to support planning and decision-making. Through the world's first same-day analysis and risk assessment service, Global Insight provides immediate insightful analysis of market conditions and key events around the world, covering economic, political, and operational factors. The company has over 3,800 clients in industry, finance, and government with revenues in excess of \$100 million, 700 employees and 25 offices in 14 countries covering North and South America, Europe, Africa, the Middle East, and Asia.

CONTACT US

Web: www.globalinsight.com

E-mail: info@globalinsight.com

NORTH AMERICA

U.S./Canada 1.800.933.3374
Mexico 1.800.687.2565

EUROPE

Frankfurt +49 (0)69.20973.0
London +44 (0)20.7452.5000
+44 (0)20.8544.7800
Milan +39 02.86481.1
Paris +33 (0)1.55.45.2600

AFRICA

Pretoria +27 (0)12.665.5420

MIDDLE EAST

London +44 (0)20.7452.5000

ASIA

Beijing +86 13.5525.99811
Gurgaon +91 (0) 9910452665
Shanghai +86 21.5228.1470
Singapore +65 6430.6621
Tokyo +81 (0)3.5219.1314